




San Bernard  
Electric  
Cooperative, Inc.

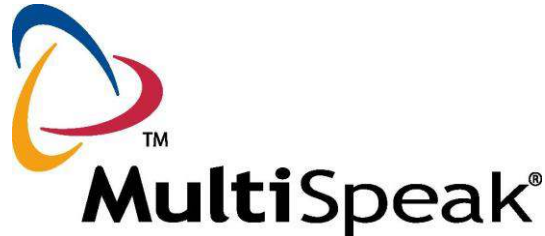
# OMS and AMR MultiSpeak Interface at San Bernard Electric Coop

## Presented by: Doug Lambert



National Rural Electric  
Cooperative Association

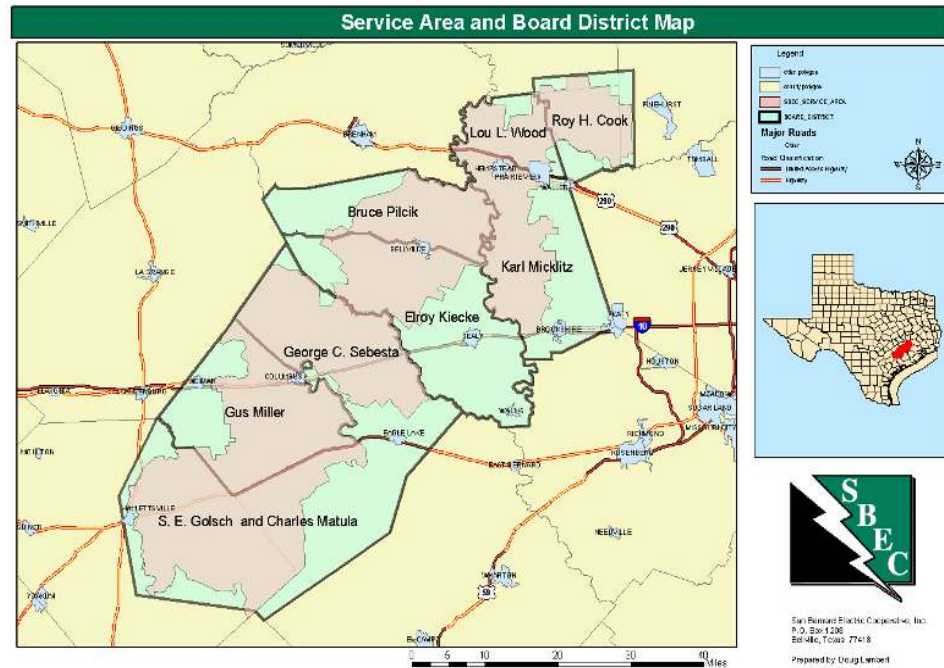
A Touchstone Energy® Cooperative 





# About SBEC

- About 23,000 Meters
- Cover Portions of 7 Counties
- Average growth of 900-1200 meters annually.
- [www.sbec.org](http://www.sbec.org)





# Software We Use

- Milsoft's DisSpatch OMS and Porche IVR
- NISC's ESRI Mapping System
- Milsoft's WindMil EA
- IDA's AVL (Truck Tracking) System
- NISC's CAPS XL Plus II CIS (IVUE in 2007)
- Survalent's SCADA system
- Turtles (TS1) and Cannon AMR



# Before the Interface:

## ■ Separate systems

### ■ Yukon Commander AMR

- Limited to one meter at a time
- Retyping of numbers
- Slower
- Limited analysis



# Yukon Commander

Commander

File View Command Help

Serial #:

Route #: All Default Routes

Sort By: Device

Devices

- 10003
- 1000704
- 1001206
- 1001500
- 1001602
- 1002004
- 1002800
- 1003300**
- 1003500
- 1003702
- 1004703
- 1005700
- 1005901
- 1006001
- 1006204
- 1006402
- 1006902
- 1007305
- 1008700
- 1009012
- 1009600
- 1010601
- 101100
- 1011400
- 1012002

Common Commands: Read Energy

Execute Command: getvalue kwh

Execute Stop

[May 13 07:25:01 AM GMT-06:00]-{1} Return from 'getvalue kwh noqueue'  
1 Emetcon DLC commands sent on route ROUTE 2020  
1003300 / KWH = 501.26

Clear Print

Command Log

[May 13 07:15:27 AM GMT-06:00] - {1} Command Sent to Device '1003300' - 'getvalue kwh noqueue'



# SBEC Operations Control Center





# Too Many Computers and Applications





# Setup Interface OMS

**Outage Preferences**

Outage Settings | Outage Cause Codes | Company Settings | Outage Alarms | **MultiSpeak Interfaces**

Interface Name	Company	Company ID	URL	User ID	Password	MultiSpeak Fun
MR-EA	Cannon	Cannon	http://192.168.1.73:8080/soap/MR_E	milsoft	milsoft	MR
DD-OA	Cannon	Cannon	http://192.168.1.73:8080/soap/DD_C	milsoft	milsoft	DD

Add/Edit Interface

Company:

Interface Name:

Company ID:

URL:

User ID:

Password:

XML Name Space:

The connection was successfully established.

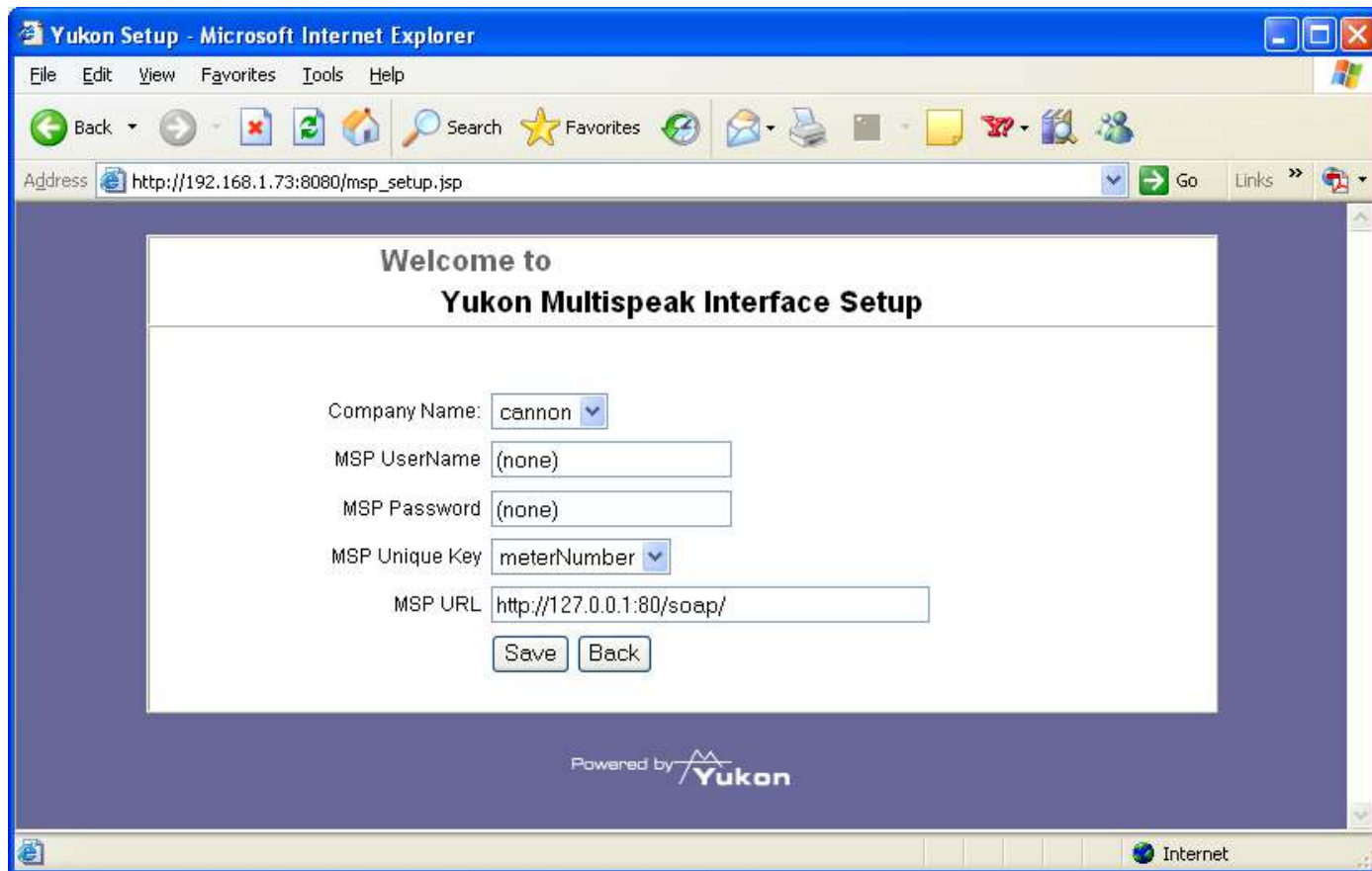
Supported web service methods...

- pingURL
- getMethods
- initiateOutageDetectionEventRequest





# Cannon used VPN to SBEC



batch Work Environment

Call Type

- Manual
- Verified
- IVR
- Sensor
- SCADA
- AMR

Weather Map

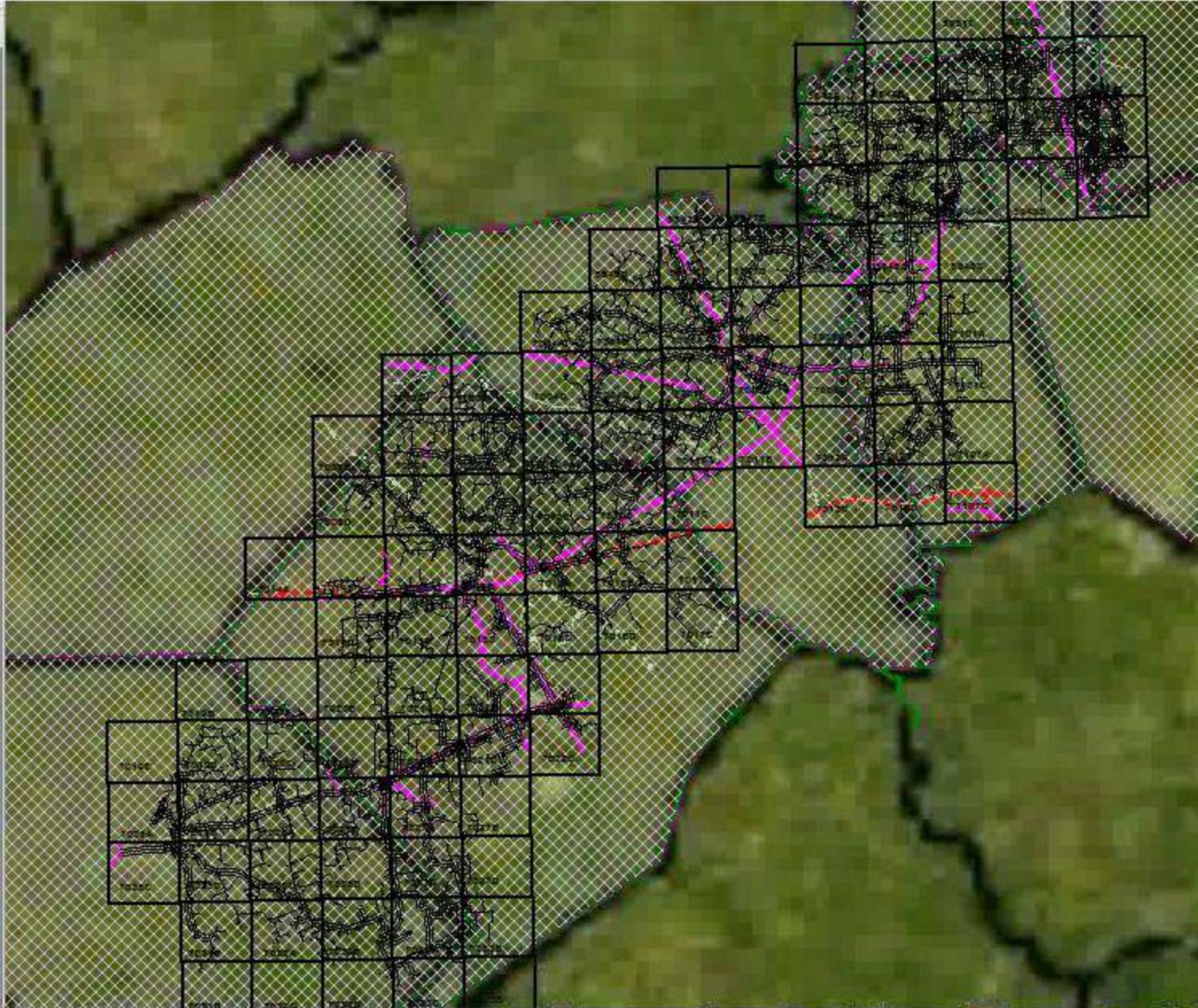
Call Operators

Crews

Assigned Outages (0)

Unassigned Outages (0)

MiniViewer



Color Mode Trace Circuit ⏪ ⏩ 📄 ✉ 📄 🔧 📄 🔍 🔍 🔍 🌐 📶 Server Online

Crews 📞 Calls ☀️ Weather ✅ Set Verify 🔄 Restore 📅 Outages 🕒 Temp Open 🕒 Temp Close 🔄 Temp Feed 🌪️ Storm Mode 🚫 No Alarms

Match | Work Environment

View Layers

- Non-Pay
- Calls
- AMR Ping
- Vehicles

Call Type

Weather Map

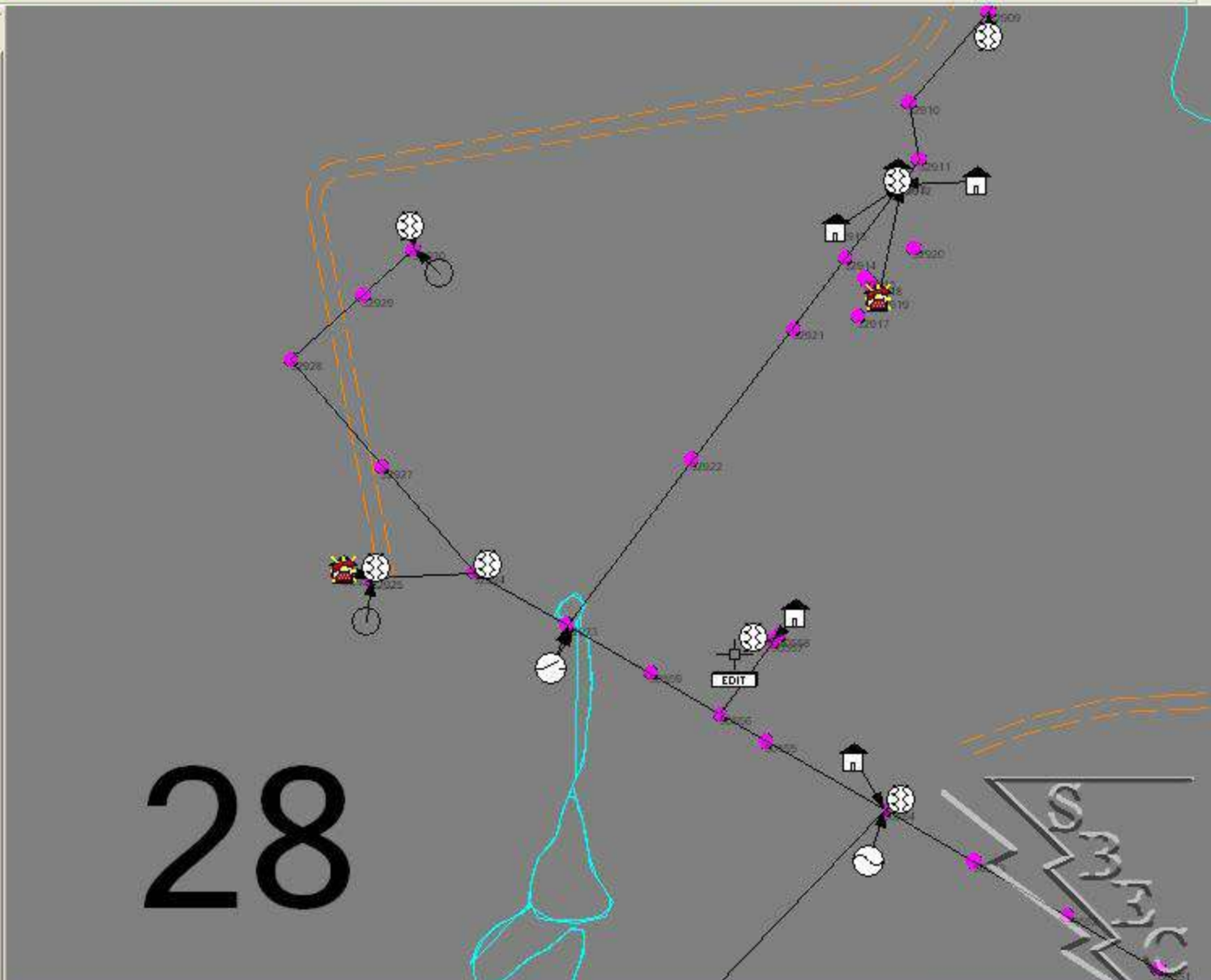
Call Operators

Crews

Assigned Outages (1)

- 2006-12-05-0030 - 80

Unassigned Outages (0)





# Advantages

- No extra clicking of the mouse
- Results on one screen
- Faster outage predictions
- Improved customer service
- Costs savings
  - Fewer wasted trips
  - Trip fees to customer
  - No Additional Software Charges



# Example of Use

- Customer with multiple meters and with same name
  - Verify the correct location out of power
  - Avoid delay in restoration
  - Avoid sending crews to wrong locations
- Instead of callbacks
  - Current SBEC policy
  - 2 am wake-up calls



# Total Cost Savings Estimate

■ Trip Fees Collected:	\$ 3,600.00
■ Eliminated Wasted Trips	\$65,100.00
■ Office Clerical time:	\$ 6083.00
■ Field Crew Time Savings:	\$36,750.00
■ Total:	\$111,533.00
■ Improved Customer Service:	Priceless



# On the Horizon

- SCADA/OMS integrated using MultiSpeak
  - Testing now
  - Adding functionality between applications
  - Data reports to OMS
    - Status
    - Analog
  - Automatic reporting of Breaker Lockouts not modeled yet.



# Future

- History of Blink counts (OMS)
- Color by... graphically (OMS)
  - Blink counts
  - Signal strength
  - Voltage limits
- Pass info to EA
  - load studies
  - Contingency
- Ping from Trucks with Mobile Data
- Automatic control of Capacitor banks to minimize losses with SCADA/Load Control
- CIS/OMS MultiSpeak Integration